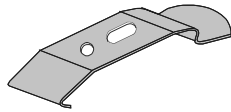


Cordless Vertical Blind Installation Instructions

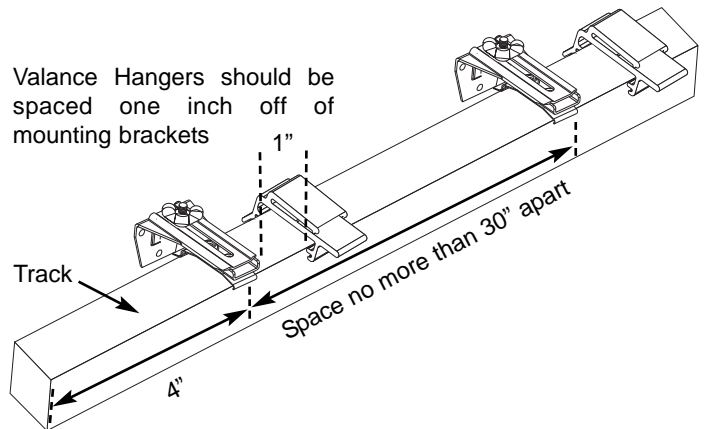
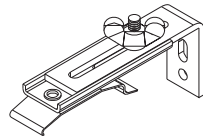
Step 1: Bracket Installation

Choose the appropriate mounting option for your application. End brackets should be located with centerlines 4" in from each end. Additional brackets should be spaced no more than 30" apart. Valance hangers should be spaced 1" off of each mounting bracket. One hanger per bracket.

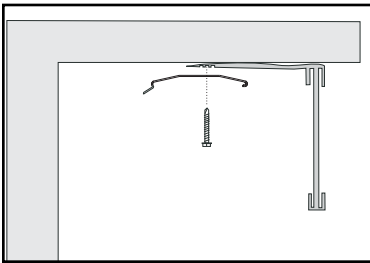
Inside/Ceiling Mount



Outside Mount

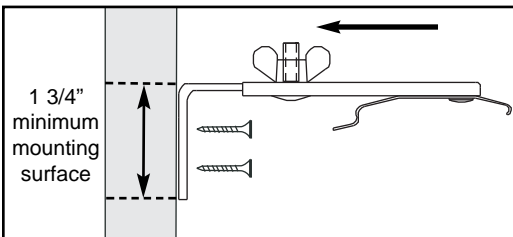


Inside/Ceiling Mount



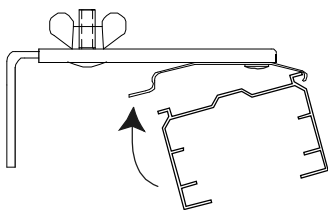
Align screw through the front hole of the Inside Mount Bracket and the center groove of the Valance.

Outside Mount



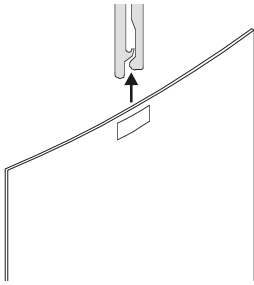
Set the bracket to the smallest position, so that the standard valance returns will fit properly. Position the mounting bracket at the desired height. Place a screw through the center of the slotted hole on the mounting bracket and secure into the mounting surface. Make sure that all mounting brackets are level. Secure brackets with a second screw through the round hole.

Step 2: Track Installation



Insert the front groove of the track into the front of the mounting clip, then push the back of the rail up to snap into the back of the mounting clip.

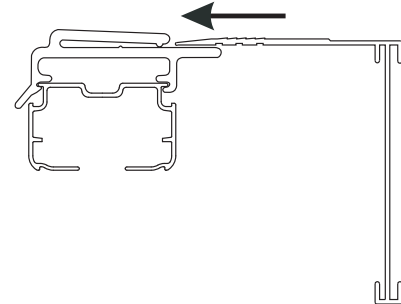
Step 3: Louver Installation



Push the louver up into the carrier stem, then pull slightly straight down to lock into place.

Step 4: Outside Mount Valance Installation

Hold valance in front of the Vertical and position where desired horizontally. The back of the flat-top of the valance will be inserted into the clip on the valance hanger. Once the valance is aligned properly insert the edge into the clip on the valance hanger and press firmly until the edge of the valance is all the way back in the clip.



Step 5: Operation

Turn the wand clockwise or counterclockwise to open and close (rotate) the vanes.



Slide the wand along the headrail to traverse the vanes. (Do not pull down on the wand)

