

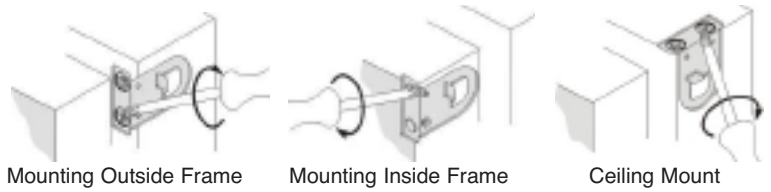
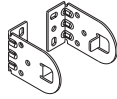
Roller Shade Installation Instructions

Continuous Loop Clutch System with Spring Loaded End Plug

Please Follow These Installation Instructions

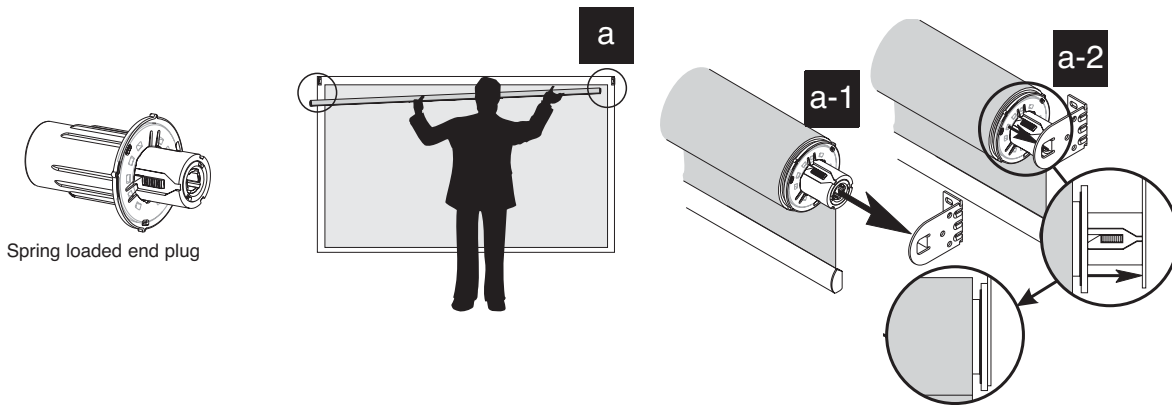
- 1 The universal brackets can be mounted in three different ways

Bracket Part # F5
Extension Bracket Part # F6

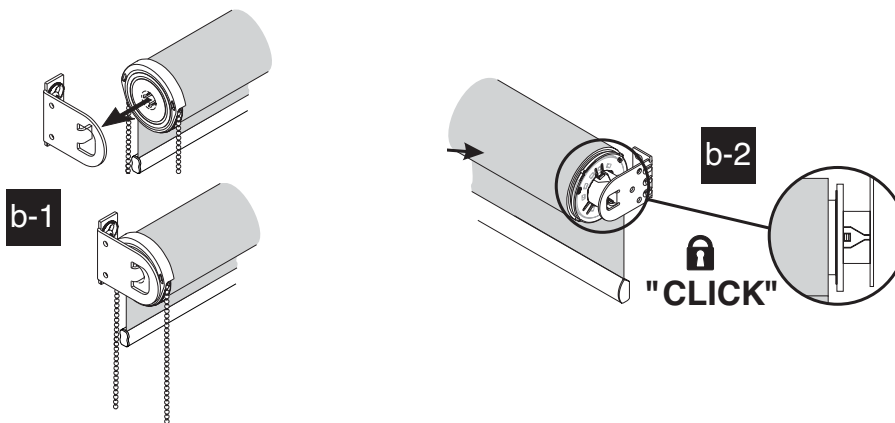


- 2 Installing the roller shade

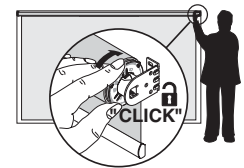
a. Place spring loaded end plug side into the bracket and compress until firmly inserted into the bracket



b. Place other end of the shade into position on the bracket and adjust until the spring loaded end plug side CLICKS in place. Once you hear a CLICK, the shade is locked in place

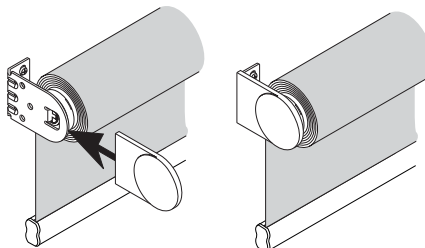


To unlock the shade, slide plastic stop to release and pull shade away from bracket



- 3 For OB Mounts

a. Slide decorative end caps over the brackets



With safety in mind we have provided you with a P-Clip to keep the beaded chain out of the reach of small children. Mount the P-Clip to the side of the window frame for inside mount, or the frame or wall for outside mount. Do not apply tension to the chain control. The chain should run through the P-clip freely.