



Custom

RomanStyle

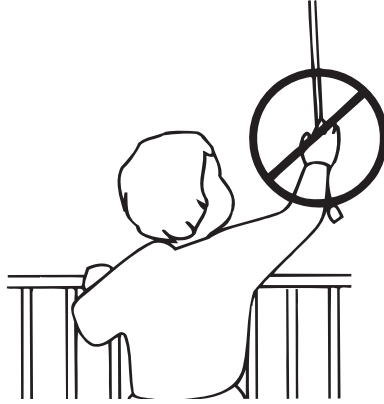
Fabric**Shade**
owner's handbook



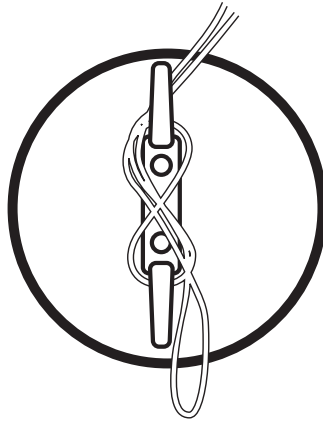


WARNING

Cords and bead chains can loop around a child's neck and strangle.



- Always keep cords and bead chains out of children's reach.
- Move furniture away from cords and bead chains. Children can climb furniture to get to cords.
- When the shade is raised, excess cord may hang within the reach of children or pets. In this case use a cord cleat (not included – see illustration).



INSTALLATION INSTRUCTIONS

Step 1. Check Package Contents

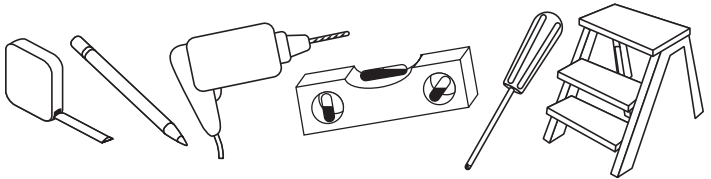
Missing part? Call 800-264-1190

Mounting hardware kit includes the following:

Part	Quantity
a. Mounting Brackets	2 (shades up to 36" wide) 3 (shades 36" to 48" wide) 4 (shades 48" to 96" wide)
Note: brackets are for Outside Mount installations only!	
b. 1-1/2" & 2" Screws	2 (shades up to 36" wide) 3 (shades 36" to 48" wide) 4 (shades 48" to 96" wide)
c. 3/4" Screws	2 (shades up to 36" wide) 3 (shades 36" to 48" wide) 4 (shades 48" to 96" wide)

Note: 3/4" & 1-1/2" & screws are for Outside Mount installations only ; 2" screws are for Inside Mount installations only

Step 2. Tools Required



Pencil, tape measure, level, screw driver, step stool, drill.

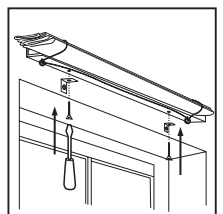
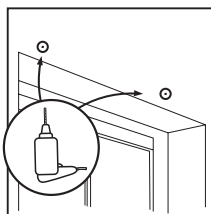
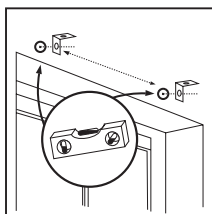
Step 3. Installation

Wallboard or Plaster: use anchors specifically designed for hollow walls (not included).

Concrete, Stone, Brick: use a masonry drill bit and anchors or screws specifically designed for masonry (not included).

For Outside Mounting:

One bracket should be positioned about 2" to 6" from each end of the head rail. For wider shades that require 3 or 4 brackets, these should be spaced evenly between the two outermost brackets. The brackets must not interfere with the cord guides or cord lock or in any way impede the movement of the lift cords – therefore, we recommend that you hold the shade in place and mark the desired bracket locations with a pencil.



The brackets must be level – use a Spirit Level if necessary to assure proper alignment.

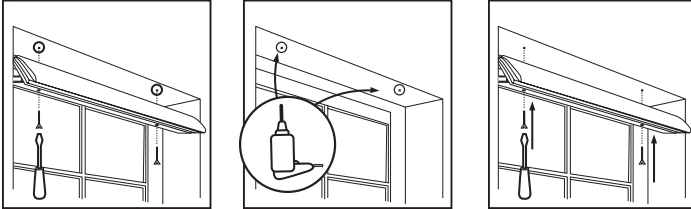
Pre-drill the mounting holes using a 5/64” drill bit, then screw the brackets in place.

Place the head rail on top of the brackets – center the shade over the window opening – then mark the location of each mounting hole on the head rail. Pierce the fabric at the hole locations using the tip of a screw, then pre-drill the mounting holes using a 5/64” drill bit. Attach the shade to the brackets using the 3/4” screws provided.

For Inside Mounting:

Mounting holes are pre-drilled in the Head Rail. Screw the 1-1/4” screws into the head rail until the tips of the screws extend very slightly beyond the top of the head rail. Align the front of the shade with the front edge of the window opening (or position as desired), making sure that the shade is centered in the window opening – then push up on the head rail so that the screw heads leave tiny impressions in the top of the window frame.

Now, use the impressions as a guide and pre-drill the mounting holes using a 5/64” drill bit – then screw the shade in place.



Step 4. How to Operate

To raise or lower the shade, pull the lift cord slightly to release the cord lock. Adjust the shade to the desired height, then move the lift cords slightly toward the outside of the shade to lock in place.

CLEANING

To clean the shade fabric, use a feather duster or vacuum lightly using the soft brush or upholstery attachment. For more extensive cleaning, please locate a professional drapery cleaning service.

REPLACEMENT PARTS

In the event that replacement parts are ever needed, you may call: 1-800-264-1190

Please be sure to provide the following information, if possible:

- The complete model or catalog number of your product
- A description of the product
- A description of the part needed

LIMITED LIFETIME WARRANTY

The enclosed product is warranted to the original residential retail purchaser as long as the product remains in the original window.

Covered:

Lifetime: Entire product against manufacturing defects (i.e. a flaw in the product design, materials, or workmanship that causes the product to no longer function)

3 years: Cords including internal cords such as those found in cordless blinds. 5 years: All fabric

Not Covered:

Normal Wear and Tear

Any product that fails due to: abuse • exposure to salt air • improper installation • accident • extraordinary use • improper operation • alterations • improper cleaning • misapplication • damage from pests/insects/pets • improper handling • misuse

Natural wood products that have: loss of color intensity • yellowing or cracking of plastic parts or foam wood product • variations in color, grain, or texture

• warping of wood slats in high humidity areas

Costs associated with: product removal • transportation to and from the retailer • brand label removal • product remeasure • incidental or consequential damages • product reinstallation • shipping

In the event there are multiple blinds/shades in the same room, only the defective blind/shade will be replaced.

To Report Shipping Damage:

If damage occurred during shipping, call place of purchase and report within 7 calendar days or else you may be denied credit for your damaged product.

To Obtain Service:

If you suspect this product has a manufacturing defect in materials or workmanship:

1. Locate the sales receipt
2. Call place of purchase

Any unauthorized returns will not be accepted.

Warranty Remedy:

THIS SHALL BE YOUR SOLE REMEDY UNDER THIS LIMITED WARRANTY.

If this product is found to have a manufacturing defect in materials or workmanship, we will (at our discretion) do one of the following: repair the product • replace the product • refund the cost of the product

Colors vary from lot to lot and may not exactly match sample swatch or previous purchases. Discontinued items or color selections will be replaced with the closest equivalent current product.

YOUR RIGHTS UNDER STATE LAW:

This lifetime limited warranty gives you specific legal rights, and you may have other rights, which vary from state to state. Some states do not allow limitations on how long a warranty lasts, so the above limitations may not apply to you.

No agent, representative, dealer, or unauthorized employee has the authority to increase or alter the obligation of this warranty. This lifetime limited warranty supersedes any previous versions.